



GAT MONTHLY MEMBERSHIP PROGRESS REPORT

Results as of: 3/31/2024

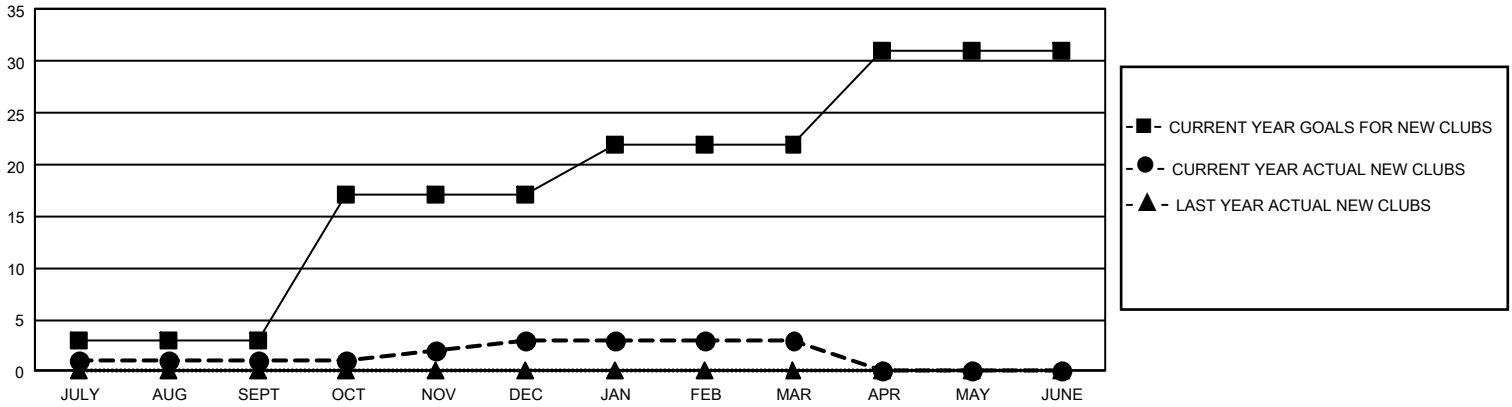
GMT Constitutional Area 1, Group E

REPORT DOES NOT INCLUDE CLUBS IN UNDISTRICTED AREAS.

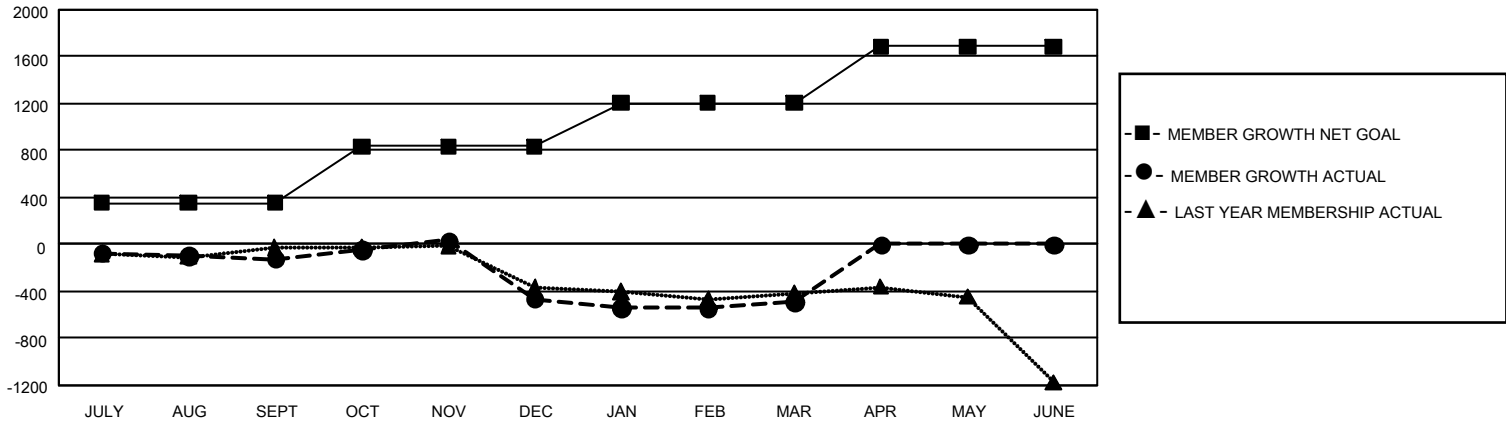
Clubs			
RESULTS FOR 2023-2024			
QUARTER	NEW CLUB GOAL	NEW CLUBS	DROPPED CLUBS
JULY/AUG/SEPT	9	1	8
OCT/NOV/DEC	42	2	22
JAN/FEB/MAR	15	0	5
APR/MAY/JUNE	27	0	0

Members			
RESULTS FOR 2023-2024			
QUARTER	MEMBER GROWTH NET GOAL	MEMBER GROWTH ACTUAL	DROPPED MEMBERS ACTUAL (including transfers)
JULY/AUG/SEPT	354	977	1,023
OCT/NOV/DEC	481	862	1,139
JAN/FEB/MAR	372	818	747
APR/MAY/JUNE	479	0	0

GOALS AND ACTUAL NEW CLUBS CUMULATIVE



GOALS AND ACTUAL MEMBERS CUMULATIVE



DROPPED CLUBS: 35	692 CLUBS OF 1,319 ADDED 1 OR MORE NEW MEMBERS	<u>GENDER DISTRIBUTION</u>	
		MALE 23,077 (67.34%)	FEMALE 11,166 (32.59%)
<u>DROPPED MEMBERS</u>		NON BINARY 1 (0.00%)	PREFER NOT TO ANSWER 23 (0.07%)
DECEASED 457	CLICK HERE FOR CUMULATIVE MEMBERSHIP DATA	TOTAL FAMILY UNIT MEMBERS 6,512	
CLUB CANCELLED 253		FAMILY MEMBERS PAYING HALF DUES 3,346	
OTHER 2,199			
TOTAL 2,909			